



# SAF HERCULES

FOR CURTAINSIDERS, REFRIGERATED  
VEHICLES, TANKERS AND SILO  
TRAILERS, TIPPERS AND WALKING  
FLOOR TRAILERS, LOW-LOADER AND  
HEAVY DUTY TRANSPORTER

# SAF HERCULES

Exceptionally robust  
and economical

## **Tried, tested and appreciated worldwide**

High quality, cost-effectiveness and reliability combined with a very long service life – the reasons why landing gear from SAF-HOLLAND has an excellent international reputation.

Our landing gear is ideal for very different scenarios, from the icy cold of Scandinavia to the shimmering desert heat of the Middle East. Ease of use and fantastic functional reliability mean that little force is required, taking some of the strain of daily coupling and uncoupling.





SPECIALLY DESIGNED FOR  
CURTAINSIDERS, REFRIGERATED  
VEHICLES, TANKERS AND SILO  
TRAILERS, AS WELL AS TIPPERS  
AND WALKING FLOOR  
TRAILERS, LOW-LOADER AND  
HEAVY DUTY TRANSPORTER

#### **SAF 3D backplate**

- Continuous 10-hole 3D backplate guarantees a variety of mounting options and facilitates the replacement of landing gear on the market

#### **SAF gearbox**

- External, compact gearbox with low installation depth enables easy inspection when needed
- The impact-resistant gearbox with a special seal is suitable for use in harsh operating conditions
- Switch easily between high and low gear

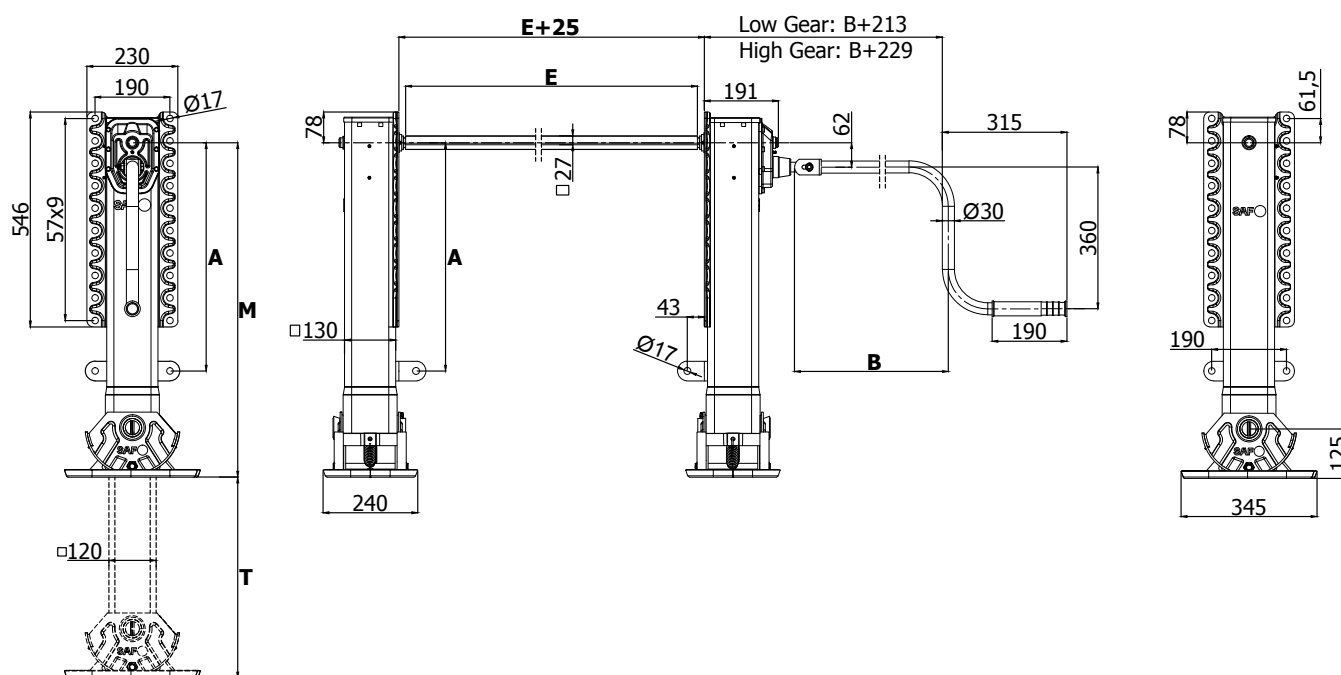
#### **Additional advantages**

- Weight-optimised: Weight reduction per set 8 kg compared to the SAF TITAN Pro
- Special coating provides long-term protection against environmental factors and stone chipping
- Web-based spare part identification via QR code on the support legs

**3-YEAR  
GUARANTEE**

## SAF HERCULES TECHNICAL DATA

<b>Lift capacity:</b>	24,000 kg
<b>Static load capacity:</b>	50,000 kg
<b>Lift in low gear:</b>	1 mm per turn
<b>Lift in high gear:</b>	12 mm per turn



**3 YEARS**  
MAINTENANCE-FREE  
THANKS TO THE  
SAF SPECIAL GREASE

Landing gear

Height M [mm]	Travel T [mm]	A [mm]			Compensator	Sandshoe high	Sandshoe low
850	510	580	with Gearbox	Type	LGH G 85-51 F S	LGH G 85-51 F T	LGH G 85-51 F TC
				Product no.	03 389 0002 00	03 389 0012 00	03 389 0022 00
				Weight [kg]	48.5	47.0	45.5
			without Gearbox	Type	LGH O 85-51 F S	LGH O 85-51 F T	LGH O 85-51 F TC
				Product No.	03 389 0001 00	03 389 0011 00	03 389 0021 00
				Weight [kg]	45.0	43.5	42.0
			Detailed Measurements	M + T [mm]	850 - 510 mm	840 - 510 mm	780 - 510 mm
800	460	530	with Gearbox	Type	LGH G 80-46 F S	LGH G 80-46 F T	LGH G 80-46 F TC
				Product No.	03 389 0004 00	03 389 0014 00	03 389 0024 00
				Weight [kg]	46.9	45.3	43.8
			without Gearbox	Type	LGH O 80-46 F S	LGH O 80-46 F T	LGH O 80-46 F TC
				Product No.	03 389 0003 00	03 389 0013 00	03 389 0023 00
				Weight [kg]	43.3	41.8	40.3
			Detailed Measurements	M + T [mm]	800 - 460 mm	790 - 460 mm	730 - 460 mm
750	410	—*	with Gearbox	Type	LGH G 75-41 F S	LGH G 75-41 F T	LGH G 75-41 F TC
				Product no.	03 389 0006 00	03 389 0016 00	03 389 0026 00
				Weight [kg]	45.3	43.7	42.2
			without Gearbox	Type	LGH O 75-41 F S	LGH O 75-41 F T	LGH O 75-41 F TC
				Product No.	03 389 0005 00	03 389 0015 00	03 389 0025 00
				Weight [kg]	41.7	40.2	38.7
			Detailed Measurements	M + T [mm]	750 - 410 mm	740 - 410 mm	680 - 410 mm
700	400/360	—*	with Gearbox	Type	LGH G 70-40 F S	LGH G 70-36 F T	LGH G 70-36 F TC
				Product No.	03 389 0008 00	03 389 0018 00	03 389 0028 00
				Weight [kg]	44.0	42.0	40.5
			without Gearbox	Type	LGH O 70-40 F S	LGH O 70-36 F T	LGH O 70-36 F TC
				Product No.	03 389 0007 00	03 389 0017 00	03 389 0027 00
				Weight [kg]	40.4	38.5	37.0
			Detailed Measurements	M + T [mm]	705 - 400 mm	690 - 360 mm	630 - 360 mm
650	350/310	—*	with Gearbox	Type	LGH G 65-35 F S	LGH G 65-31 F T	LGH G 65-31 F TC
				Product no.	03 389 0010 00	03 389 0020 00	03 389 0030 00
				Weight [kg]	42.3	40.3	38.8
			without Gearbox	Type	LGH O 65-35 F S	LGH O 65-31 F T	LGH O 65-31 F TC
				Product No.	03 389 0009 00	03 389 0019 00	03 389 0029 00
				Weight [kg]	38.7	36.8	35.3
			Detailed Measurements	M + T [mm]	655 - 350 mm	640 - 310 mm	580 - 310 mm

\*can be ordered loose

Connecting shaft

Length E [mm]	Product No.
1164	01 435 0022 00
1340	01 435 0023 00
1440	01 435 0024 00
1450	01 435 0025 00
1470	01 435 0026 00
1500	01 435 0027 00
1505	01 435 0028 00
1575	01 435 0029 00
1600	01 435 0030 00
1605	01 435 0031 00
1635	01 435 0032 00
1700	01 435 0033 00
1790	01 435 0034 00
1800	01 435 0035 00
1950	01 435 0036 00

Crank handle

Length B [mm]	Product No.
285	01 209 0001 00
350	01 209 0002 00
450	01 209 0003 00
535	01 209 0004 00
605	01 209 0005 00

Crank holder

Length [mm]	Product No.
260	01 189 0135 00

Bracing attachment loose  
for mounting height 650-700-750

Weight [kg]	Product No.
1,1	02 045 0056 00



TRAILER AXLES AND  
SUSPENSION SYSTEMS



COUPLING AND LIFTING  
TECHNOLOGY



SUSPENSIONS FOR  
TRUCKS AND BUSES

[safholland.com](http://safholland.com)

**SAF-HOLLAND GmbH**

Hauptstraße 26 - 63856 Bessenbach - Germany

Tel +49 6095 301-0 - [info@safholland.de](mailto:info@safholland.de)